



# A Lasting Legacy. A Commitment to Quality.

Machine Storage | Farm Shop | Farm Office | Seed Storage | General Farm Use



## DEPENDABILITY

Morton Buildings is one of the largest, most established builders in the U.S. We will be in business to serve you now, and for years to come.





“Morton buildings are sure high quality. They use high-quality products and they are very durable.”

Rob F. • Cordova, IL

**Excellence Since 1903.** Morton Buildings began in 1903 as the Interlocking Fence Company. Our mission was to provide quality fencing materials, by mail, to local farmers. In 1949, we constructed our first pre-engineered building. From there, Morton Buildings was born and has provided dependable, attractive buildings to our customers ever since. Morton Buildings now owns and operates construction centers across the country as well as six manufacturing plants. From concept through completion, Morton Buildings employees handle every aspect of the construction process, taking the worry out of buying a new building. From discussing floor plans and building sizes with your sales consultant to watching a Morton truck driver deliver materials and a Morton-certified crew construct your building, Morton is here to serve you. We buy only quality materials and many of our building components are manufactured in our own plants to ensure quality from the ground up. One thing that hasn't changed over the years is our dedication to providing the best to our customers.

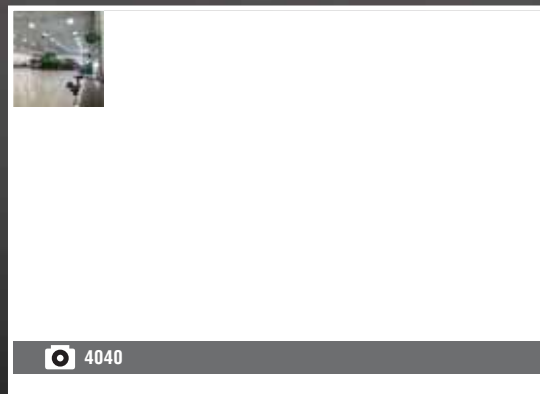


## QUALITY

From manufacturing our own building components to constructing your building, Morton handles your entire building project from concept through completion to ensure it meets our high standards.



3197



4040



4147



“I can’t say enough about the energy part of it. It’s a very tight building, it could be raining/hailing outside and you can barely tell.”

Carl H. • Middletown, CT

**Providing for the American Farmer.** As a company that was founded to provide quality materials and service to American farmers, we understand the needs of the farming community and continue to evolve to meet industry demands. From the smallest, specialized operation to the largest, agricultural enterprise—we look for new innovations for your farm to increase productivity and efficiency. Our innovations include the raised-chord truss system, designed to accommodate the ever-increasing size of machinery; Morton’s Energy Performer® insulation system, which provides a comfortable environment to service equipment; and Morton’s exclusive AlumaSteel® sliding door locking system, which provides convenience and flexibility when accessing your building.

We have also expanded our product line over the years to now include everything from machine storage buildings and farm shops to garages, horse barns, homes and even commercial buildings. Regardless of building size or use, Morton has a building for every budget and can work with you on a wide variety of projects.

## WARRANTY

Morton buildings are backed by the strongest, non-prorated warranty in the industry.



4014



3260



4071



“Communication was great, and they [crew] showed up when they said they were going to be there and they left at night when they were done.”

Steve H. • Pine City, NY

**Standing Behind You.** Morton buildings are backed by the strongest, non-prorated warranty in the industry. Written with easy-to-understand language, our warranty serves to directly inform, not confuse, our customers. At Morton, we honor our commitment to you, a pledge that dates back to the first Morton building, which was constructed over six decades ago. All of our warranties are also handled in-house and include labor, which means Morton is truly with you from concept through completion and beyond.

## STRENGTH

Morton Buildings has served the American farmer for more than 100 years and continues to innovate and grow as a company.



3197



4155



3441





“Morton from top to bottom, from delivery to erection, to putting the finishing details on it—clear through the process—beginning with the design, it’s an exceptional experience.”

Steve M. • Ottumwa, IA



## VALUE

Morton buildings are constructed to last for generations. We use only high-quality building components to ensure our buildings look and function like new for years to come.



3721



4149



3568



“Morton Buildings is the joy of my life.  
I spend probably three to four days a week in it  
when I’m not engaged in my farm activities and  
I just love working in the building.”

Vaughn K. • Bozeman, MT



## REPUTATION

Morton Buildings takes pride in being the industry leader in post-frame construction by providing a quality building and exceptional customer service.



3772



3566



3583



General Use



Workshop



General Use



Hay Storage

## A Clean, Efficient Interior to Make Your Own

Whether your building is strictly for machine storage or you have plans to dedicate part of your new building to the shop you've always wanted or an

office for your farming operation, with a Morton building you start with a blank slate and make it your own.



Loft for Storage



Insulated Machine Storage



Kitchen



Farm Office



Machine Storage



Workshop



Continuous Vented Ridge



300 Series Stainless Steel Internal Drive® Screw



Morton's Steel Roll-Forming Machine

## What Makes a Morton Building Unique?

The Morton advantage is evident from your first meeting with your local sales consultant to the day your crew foreman hands you the keys to your new building. Our collective knowledge allows us to construct superior buildings while delivering an exceptional building experience. When you buy a Morton building, you are joining a proud legacy of Morton owners who choose Morton Buildings time and time again to construct their buildings.

Morton's specially engineered foundation system, the Morton Foundation System™ (MFS), uses concrete lower columns in your foundation, rather than wood. The MFS is manufactured by Morton and used exclusively for Morton buildings. After years of research and testing, we've perfected the method for how we create these concrete columns and their components. We never use concrete cookies—the MFS is cast in place at your building site, providing a more permanent solution for improving the strength and durability of the structures we build.

Morton buildings are engineered from the foundation to the roof trusses to be dependable, long lasting and attractive. To ensure this, Morton uses only quality components.

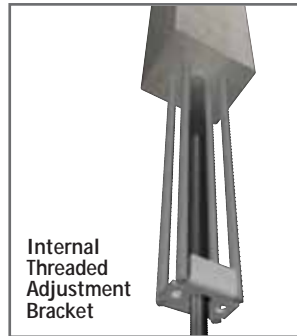
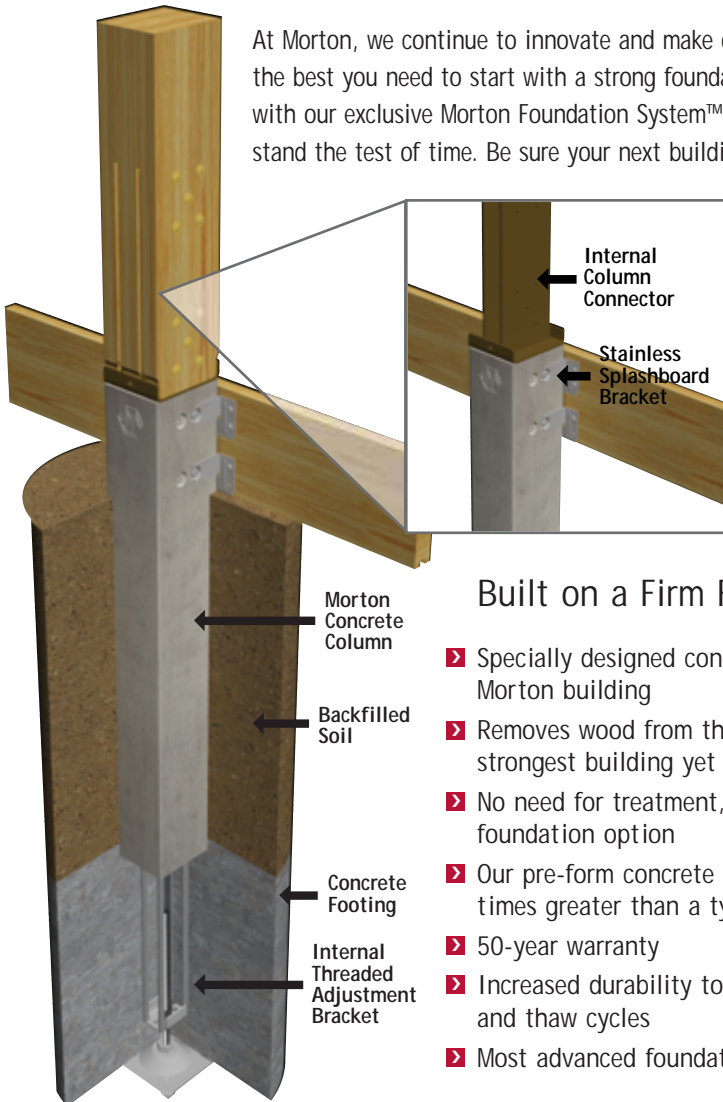
Morton's Hi-Rib™ steel is roll-formed with arch-shaped, one inch high major ribs on 12" center. When a load is placed on top of an arch, one of the strongest architectural shapes, instead of collapsing, the force of the load spreads out and down the arch's side. Our Hi-Rib panels are not only strong, they are also aesthetically pleasing and reflect sunlight from various angles. Our steel is hail impact resistant and external fire resistant, supported by the Underwriter's Laboratory; the durability of our steel can translate into building insurance discounts for some customers.

Stainless steel internal drive screws have a solid 300 series stainless steel head and shank with carbon steel tip for penetrating steel panels. The screws are painted to match our steel colors. The screws also have separate stainless EPDM washers. It is highly resistant to deterioration by UV rays and remains flexible even in extreme heat or cold. It also forms an excellent seal between the screw and steel.



## The New Standard in Foundations

At Morton, we continue to innovate and make our buildings the best in the industry. To be the best you need to start with a strong foundation. All Morton buildings come standard with our exclusive Morton Foundation System™ that removes wood from the ground and can stand the test of time. Be sure your next building has the strength and durability to last.



### Built on a Firm Foundation

- ▶ Specially designed concrete columns made for your Morton building
- ▶ Removes wood from the ground, creating the strongest building yet
- ▶ No need for treatment, providing an eco-friendly foundation option
- ▶ Our pre-form concrete column strength is 2.5 times greater than a typical concrete foundation wall
- ▶ 50-year warranty
- ▶ Increased durability to corrosion, shock, freeze and thaw cycles
- ▶ Most advanced foundation in the post-frame industry

## Doors

The doors will be the most used component on your building. Morton offers a variety of door options including overhead, bi-fold, hydraulic lifted and sliding doors to fit your needs. Your Morton sales consultant will work with you to ensure your door is the proper size and offers the clearance you need for your equipment.



Overhead Door



Bi-Fold Doors



Hydraulic Lifted Doors



Crossbar Diamond "M" Sliding Door

## HYBRID BUILDINGS

Morton's hybrid technology allows for clear span buildings up to 150'.



## The New Standard in Size and Strength

Combining the strength and spanning capabilities of steel along with the affordability, design flexibility and energy efficiency of post-frame construction makes Morton's hybrid buildings the best option for a variety of building applications.

While wood-frame buildings have flexibility when it comes to layout and design, steel-frame buildings offer increased interior space thanks to large clear-span capabilities. By combining the best of wood and steel construction, Morton's hybrid building provide the ultimate option in size, strength, efficiency and flexibility up to 150'.

With Morton hybrid buildings, you choose the floor plan that best fits your needs and the features you want in a building. At Morton, we listen to your needs and ideas and work with you to develop a plan while also allowing for future expansion.

Steel trusses provide as much as 33% more interior space than traditional wood-framed construction. Because hybrid buildings use steel trusses and wood framing, they provide better insulating properties than all-steel buildings. Wood framing can also outperform many all-steel structures because wood framing provides a wind-resistant box, even before the siding is attached.





# Superior Paint System: FLUOROFLEX® 1000

Morton Buildings recognizes that a superior building is best accented with an outstanding paint coating. That's why Morton offers the FLUOROFLEX paint system. FLUOROFLEX 1000 consists of a 70% polyvinylidene difluoride (PVDF) topcoat or "color coat" and polyurethane primer that is coated onto a heavy GALVALUME® or a heavy hot-dipped galvanized steel substrate. This superior paint system provides your building with multiple layers of protection.

FLUOROFLEX 1000 provides superior protection against fading, chalking, paint peeling and red rust. Because it resists the effects of ultraviolet rays, rain and pollution, it retains color and gloss far longer than standard consumer or commercial paint coatings. Morton is proud to offer a 35 year warranty against chalking, fading and peeling of FLUOROFLEX 1000.

FLUOROFLEX® 1000 is a trademark of Morton Buildings, Inc.



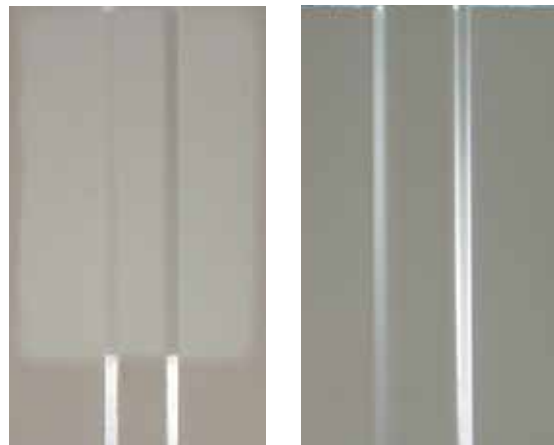
Ask a sales consultant about our ENERGY STAR® label qualified colors.

## Paint Color Selections

Colors are for illustrative purposes only and may vary from actual colors or finishes.



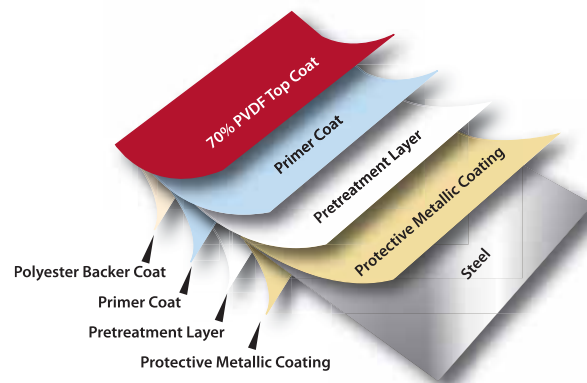
## Actual Photos of Fade Test Performed in QUV (accelerated weathering machine under identical conditions)



Polyester Used by Others

Morton's Paint System

## FLUOROFLEX® Paint System



AlumaSteel Sliding Doors

# Morton's AlumaSteel® Sliding Door System

Exceptionally strong and lightweight, AlumaSteel sliding doors open and close easily and are warranted for five years with no wind velocity limit. Color-matched to accent your building, they are available in a variety of widths, from 8' to 40'. For more than 20 years, Morton's AlumaSteel sliding doors have been used by thousands of satisfied customers.

## Variety of Building Options

Morton Buildings offers countless features that add function and style. These are just a few of our most popular options. Your sales consultant can help you choose other features and options that best suit you.



Steel Wainscot



Door Jamb Protectors



Wire Mesh Bird Protection



Lightning Rods



Protective Liner



Hi-Rib™ Acoustical Steel

# Energy Performer<sup>®</sup> Insulation Package— See and Feel the Difference

From hobby shops to commercial buildings, our Energy Performer insulation package adds value while saving you money on your heating and cooling bills. The Energy Performer package provides several features including:

- › Walls nearly 9 inches thick with 6 inches of insulation. (With the option to add more/thicker insulation.)
- › Wide blankets of insulations vs. only 14 ½ inches in standard stud wall construction.
- › Polyethylene vapor retarder installed to keep insulation dry and reduce infiltration and heat loss by creating a seal. HVAC, electricity and plumbing can also be run inside the vapor barrier without cutting holes or breaking the seal.
- › Fully ventilated attic provides condensation control, resulting in dry insulation, which is more effective.
- › 15 ½ inch truss heels allow full depth, blown-in ceiling insulation with a rating of R-38 or greater (ENERGY STAR<sup>®</sup> compliant)\*, with the option to add more insulation to obtain an overall average rating up to R-60, and air space for attic ventilation.
- › Sidewall fiberglass blanket insulation provides a true R-19. By using thicker walls and more insulation, a greater R-Value can be achieved.

Energy Performer not only saves you money by reducing your heating and cooling bills, it also gives your building a finished look. Exposed insulation can tear, reducing the value of the insulation and making the interior of a building look worn; with Energy Performer, your insulation is protected.

## Progressive installation of a corner section of the Energy Performer insulation system



View of corner section before insulation

Add blankets of insulation and air deflector

Add vapor retarder and nailers

Add Morton Buildings' steel with optional Hi-Rib™ acoustical steel panel at top of wall

Finished view showing the ceiling enclosed with our optional acoustical Hi-Rib steel

\*An R-Value rating is a standard measure of thermal resistance. The more difficult it is for heat to pass through the insulation, the greater the R-Value.



## Additional Insulation Options

One of the most energy-efficient of all rigid foam insulations, Thermax<sup>®</sup> heavy duty provides an attractive white finish, is bird and sag resistant, and offers condensation control. With Thermax heavy duty, it will cost less to heat or cool your building. Available in half-inch and one-inch thicknesses, it is recommended for buildings that see intermittent usage or areas with moderate weather.

As an economical insulation alternative, Morton Buildings offers condensation control options. One option is Morton's Dry-Panel. Dry-Panel protects from dripping condensation in your building and the damage that can result. This option is applied directly to steel panels at Morton's manufacturing plants, saving time and money on the jobsite. This and other condensation control products minimize condensation in your building and also provide some sound deadening characteristics. These options are best used for basic cold storage or environments with minimal seasonal change.

BEFORE



AFTER

## Let Morton Extend the Life of Your Building

For the first time, Morton Buildings is introducing a new service team dedicated to building repairs and renovations. Our services include minor or major repairs and renovations to siding, wainscot, doors, windows or roof steel.

Our staff will be happy to work on a restoration that will elevate the quality of your facilities. Take advantage of this opportunity to get the most from your existing building. We are committed to respond with urgency to provide the service necessary for your building to thrive long into the future. We know even the strongest buildings need maintenance over time. Contact us today to make your building feel and function like new.



### Popular Requests Include

- Door Repairs & Replacements
- Door Conversions
- Rotted Post Repairs
- Roof Replacements
- Insulation Packages
- Gutter Repairs
- Renovations
- Additions
- Trim Repair
- Skylight Installation

## 20 Questions to Ask Your Builder Before You Buy

### Company Practices

- 1 How long has your company been in business?
- 2 Can you provide a list of buildings that you have constructed in my county? Can I speak to the owners?
- 3 Can I see buildings that were constructed 10 or more years ago? How have they “held up”?
- 4 Does the price of the building include the following: permits, zoning fees, material taxes, delivery charges, construction labor, dumpster, toilet facilities during construction, builder’s insurance and safety equipment?
- 5 Who is responsible for permits and zoning issues?
- 6 Who do I contact for warranty issues and claims? (Is the warranty directly from the builder or is it a “pass through warranty” from the builder’s supplier?)

### Structural Integrity

- 7 Is the building engineered specifically for my use and land conditions?
- 8 What is the wind and snow load capacity of the building?
- 9 What unique features add to the energy efficiency of your buildings? How does this compare to other builders?

### Building Process

- 10 Who is accountable for the project timeline and any problems that occur?
- 11 Tell me about the materials used in the building.
- 12 Where, and by whom, are the materials made?
- 13 Who delivers the materials? Will they be on-time and well cared for?
- 14 Who constructs the building—employees or contracted labor?
- 15 What kind of paint is used and what is the process?
- 16 What is the thickness of the steel used?
- 17 Is any of the work subcontracted?
- 18 Are the subcontractors insured? Bonded?
- 19 Are the construction crews insured and bonded? Can I see proof? Who is liable if a worker gets injured on my property?
- 20 What kind of training do your construction crews receive? How many buildings a year do they construct for the company?

# Building Across The Nation

With more than 100 company-owned construction centers strategically located throughout the United States, there's a Morton Buildings sales consultant nearby to better serve you.



Find your local sales office at [mortonbuildings.com](http://mortonbuildings.com) or 800-447-7436



Construction details and material specifications shown are subject to change without notice. Colors reproduced in this brochure are for illustrative purposes only and may vary from actual colors or finishes. Certain features shown are non-stock items and may be purchased through your local Morton Buildings construction center. Options and features shown may not be available on all building types or styles. The statements and opinions about products expressed here are those of specific

customers and should not be construed to represent all buildings or products sold, manufactured, distributed, or constructed by Morton Buildings. ©2018 Morton Buildings, Inc. Morton Buildings is a registered trademark of Morton Buildings, Inc. All rights reserved. A listing of GC licenses available at [mortonbuildings.com/licenses](http://mortonbuildings.com/licenses). Form '2109/10M/9-18 Printed in the U.S.A.